

**SOCIAL
INNOVATION
IN HEALTH
INITIATIVE**

Advancing Community-engaged Social Innovations through Research

Meredith del Pilar-Labarda, MD, DrSD
Lead, SIHI Global Secretariat
Lead, SIHI Philippines Hub



OUTLINE

- Health Delivery Gap: The need for system change
- Social Innovation to transform health care delivery
- SIHI to embed social innovation research in countries to accelerate UHC
- SIHI Network expansion facilitated by SIHI Secretariat
- From Social Innovation Research to UHC and SDGs
- Towards Institutionalization and Sustainability

HEALTH CARE DELIVERY GAP

Half the world lacks access to essential health services.

World Health Organization & World Bank, 2017

THE OPPORTUNITY

Community-engaged social innovation to transform health systems towards SDGs

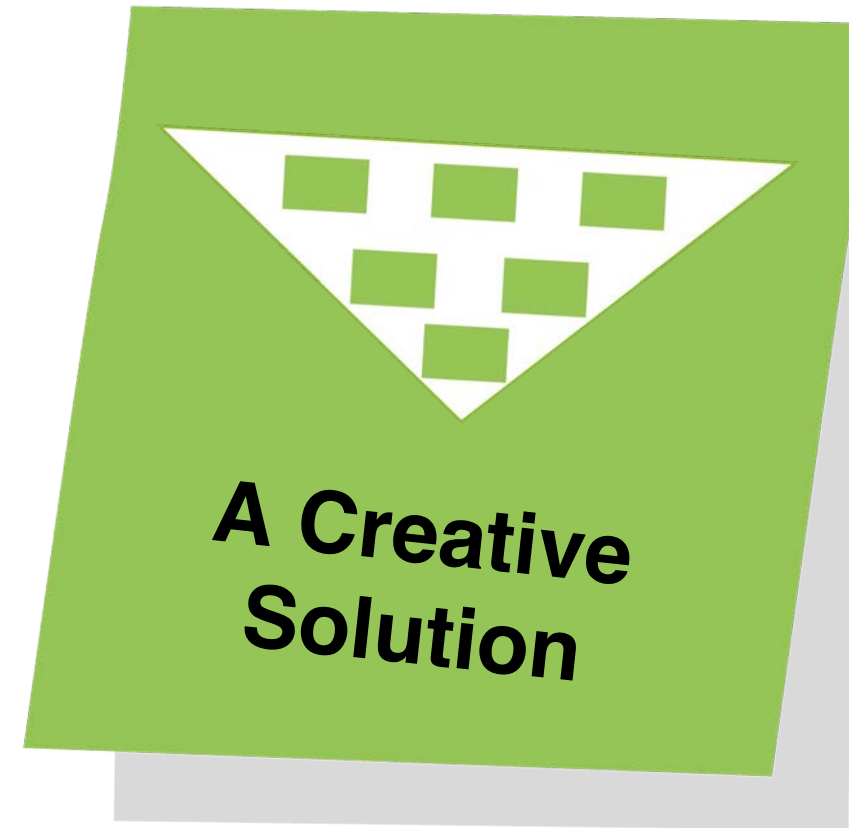
Social innovations in health are inclusive solutions that meet the needs of end users through a multi-stakeholder, community-engaged process.

Halpaap et al., Lancet Global Health, 2020

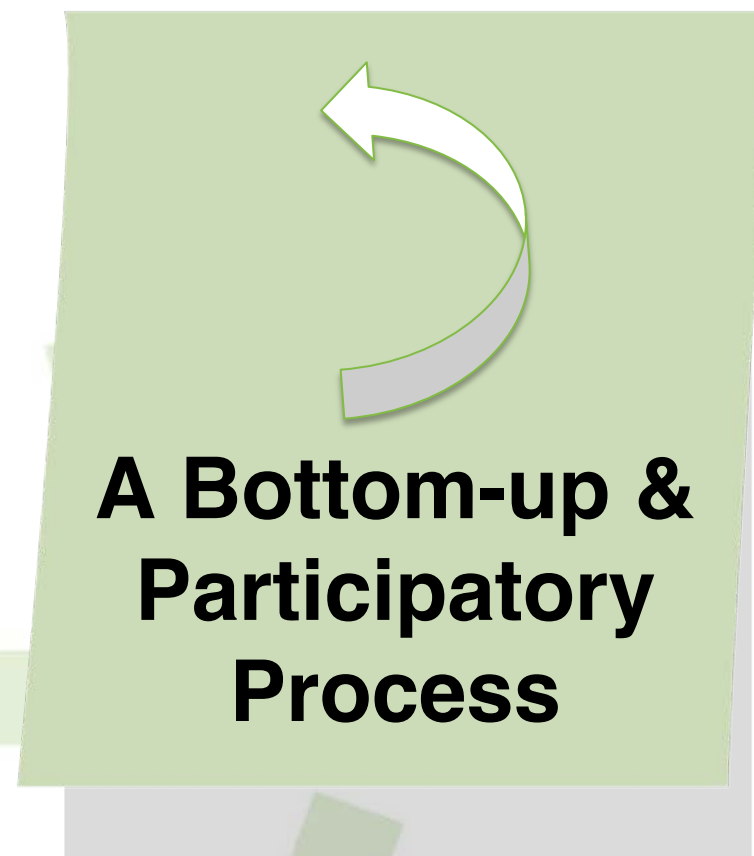
WHAT IS SOCIAL INNOVATION IN HEALTH?



- A new lens to health systems transformation



- Addressing a systemic health challenge
- Reaching vulnerable populations
- Effective, inclusive & affordable solution



- Engaging communities, governments and other actors
- Multi-sectoral and multi-disciplinary approach
- People – centered approach

Inter-island Health Service Boat Project: Example of Social Innovation from the Philippines



- **CHALLENGE:** Transporting high-risk pregnant women in an accredited birthing facility is challenging due to lack of circumferential roads in Zumarraga island in Samar
- **SOLUTION:** The Inter-Island Health Service Boat Project (a sea ambulance or a boat referral system)
- **IMPACT:**
 - ❖ Facility-based deliveries improved from 20% in 2013 to 90% in 2015
 - ❖ facility earned > 1 M Php (approx. USD 20,000) from PhilHealth reimbursements and is used to sustain the project
 - ❖ awarded by the Department of Health for exemplary MNCHN accomplishments

Chipatala Cha Pa Foni (CCPF) “Health Center by Phone”: Example of a Social Innovation from Malawi



Credit: Lindi van Niekerk, SIHI, Malawi, 2017

- **CHALLENGE:** In remote and rural communities, distance often prevents people from seeking health care when they need it.
- **SOLUTION:** CCPF provides a toll-free hotline where callers can speak with trained health workers
- **IMPACT:**
 - ❖ Increased knowledge of available maternal health services
 - ❖ reduced the burden on the rural health facilities and rural health workers by resolving 75% of the calls without referral to a health facility
 - ❖ scale up in the country by the government

Mamás Del Río or Mothers of the River: Example of Social Innovation from Peru



- **CHALLENGE:** Difficult access to health, lack of culturally appropriate delivery care by health facilities, and unfavourable attitudes in seeking medical assistance—worsened during COVID-19 travel restrictions.
- **SOLUTION:** Mamas Del Rio as a multidisciplinary approach to improve the health of mothers and new-borns in the Loreto Region of Peru; rapidly adapted to address COVID-19 related challenges during the pandemic.
- **IMPACT:**
 - ❖ community health workers have conducted 1113 visits to pregnant women and provided 270 safe delivery kits
 - ❖ enabled the community to sustain maternal and neonatal health services while responding to urgent needs of the COVID-19 pandemic

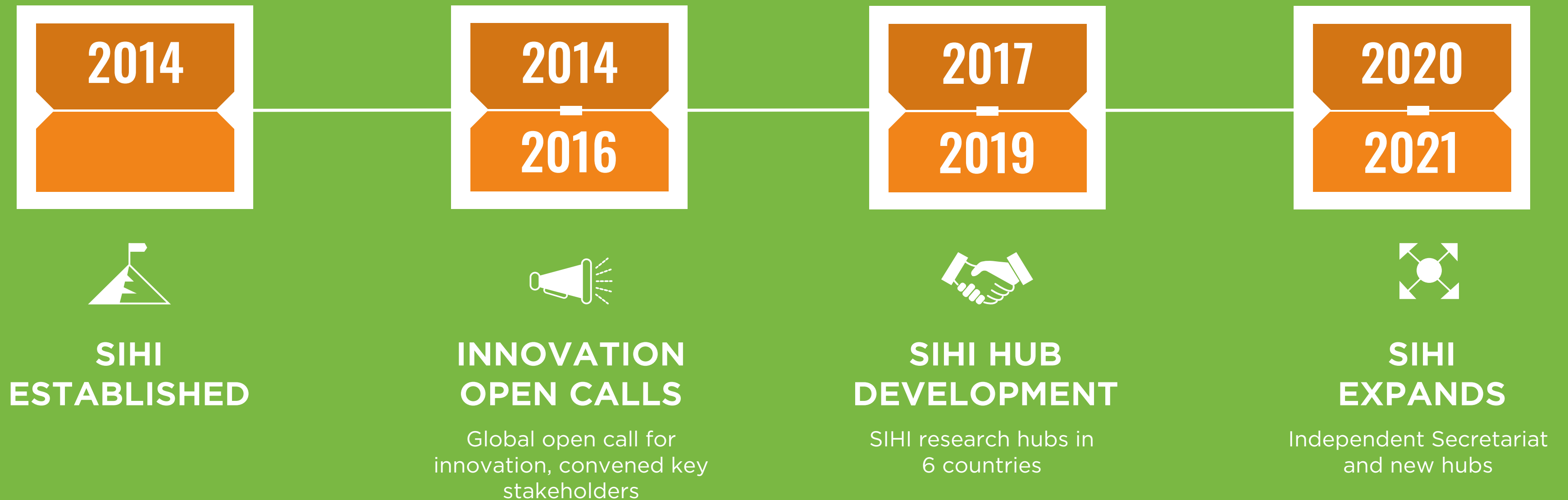


WHAT IF

Community-engaged
social innovation
research played a
catalytic role in
accelerating universal
health coverage?

SOCIAL INNOVATION IN HEALTH INITIATIVE (SIHI)

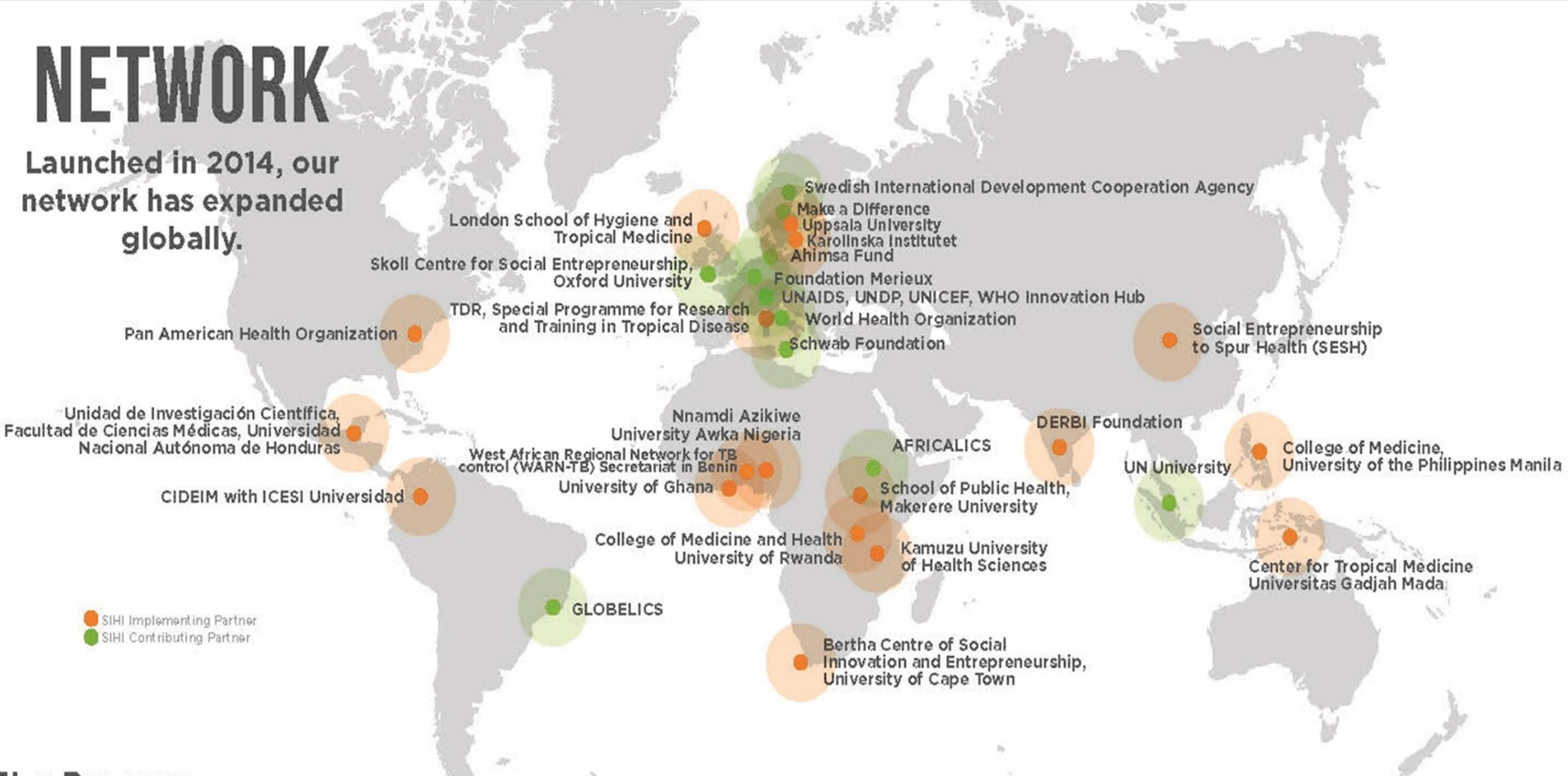
13 SIHI hubs (6 in Africa, 4 in Asia, 2 in Latin America and 1 in Europe)”, SIHI is a global network of partners invested in advancing social innovation in health through **research, capacity building and advocacy.**



SIHI to embed social innovation research in countries

NETWORK

Launched in 2014, our network has expanded globally.



SIHI Expansion facilitated by the SIHI Secretariat

SOCIAL
INNOVATION
IN HEALTH
INITIATIVE



SIHI Overview 2020 // Let's Partner for Health!

SIHI SECRETARIAT – 2020

Our new SIHI secretariat based at the University of the Philippines Manila to support with:

Partner coordination

SIHI Global network communication

Sustainability of the network



Some Highlights of the Network's Achievements

1 IDENTIFY



With help from an independent experts panel, we **Identify and showcase** social innovations to health care delivery challenges.

innovation calls  **21**

 **421** eligible innovations


 **21**


Different countries across Africa, Asia & Latin America and the Caribbean


2 RESEARCH & ADVOCATE




We **contribute to the growing body of research** on social innovation in health through publications and visual media.

55  case studies

17  country profiles

 **4** WHO publications

 **42** short films


3 CAPACITATE & CONVENE





We **bring together** diverse actors to collaborate towards advancing social innovation in health.

9 international convenings with **200** participants from **24** countries



14 courses & tools developed 


 **21** conference representation

8  SIHI network meetings

SIHI Research and Publications

SOCIAL
INNOVATION
IN HEALTH
INITIATIVE

BMC Part of Springer Nature

Search  Explore journals Get publi

Social innovation to transform health care delivery

Guest edited by Lenore Manderson, Uche Amazigo and Phyllis Dako-Gyeke

A thematic series in *Infectious Diseases of Poverty*.



Gaps continue to exist in health systems and access to health services, in low- and middle-income countries, despite advances in disease prevention and control, diagnosis and treatment. Social innovations provide a fresh lens to strengthen health systems and primary health care. Through participatory approaches, novel solutions are designed and implemented by innovators, health system actors and other actors to address complex and longstanding health problems.

Social innovations can be processes, market mechanisms, roles or behavioral practices, or new paradigms and policies. They enable healthcare delivery to be more inclusive, effective and affordable. Social innovation tackles “how” to improve health, by engaging communities in creating and sustaining solutions. This series features the work of the Social Innovation in Health Initiative established in 2014 under TDR’s leadership and in collaboration with research organizations and partners to advance social innovation through research, capacity strengthening and advocacy. Writing from an interdisciplinary and multidisciplinary perspective, the authors analyse how social innovation has been used in research, in practice, and in informing new paradigms and policies. In showcasing community-engaged approaches in transforming health care delivery, we illustrate how social innovation can accelerate progress towards Universal Health Coverage and the Sustainable Development Goals.



May 2022
A special supplement in partnership with SIHI, PAHO, TDR, SIDA and SESH

BMJ Innovations

Social innovations in health

Multi-Hub Research Projects

Community Engagement Package

Evidence and research capacity strengthening in SIHI with an intersectional gender lens: A contribution to implement TDR's Intersectional Gender Research Strategy



Social Innovation in Health Initiative to collaborate with WHO Health Emergencies Programme

7 December 2020 | News release | Reading time: 3 min (778 words)

The Social Innovation in Health Initiative (SIHI) has been selected as partner and awarded US\$ 150 000 by WHO's Health Emergencies Programme to develop a community engagement package that will support the implementation of various health interventions.

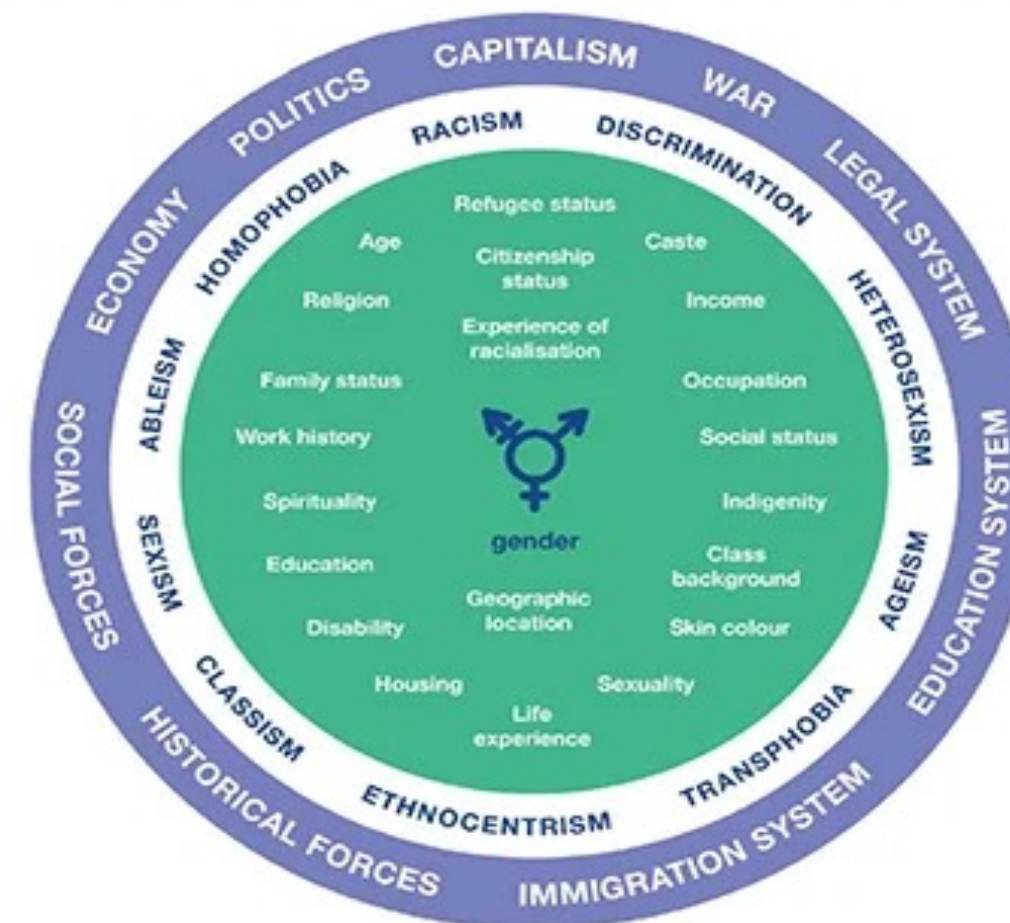
The Country Readiness Strengthening Department in WHO's Health Emergencies Programme is leading a Community Engagement Package Project that will bring together experiences on successful community engagement activities in different contexts, settings and target groups. These resources will be used to develop targeted microlearning modules to support various health interventions, such as vaccine implementation and emergency response efforts.

The Community Engagement Package comprises three components:

- a database of experiences on community engagement practices in different settings, contexts and target groups;
- a learning component that will take the form of microlearning modules; and
- a workshop package – to continuously gather good community engagement practices.

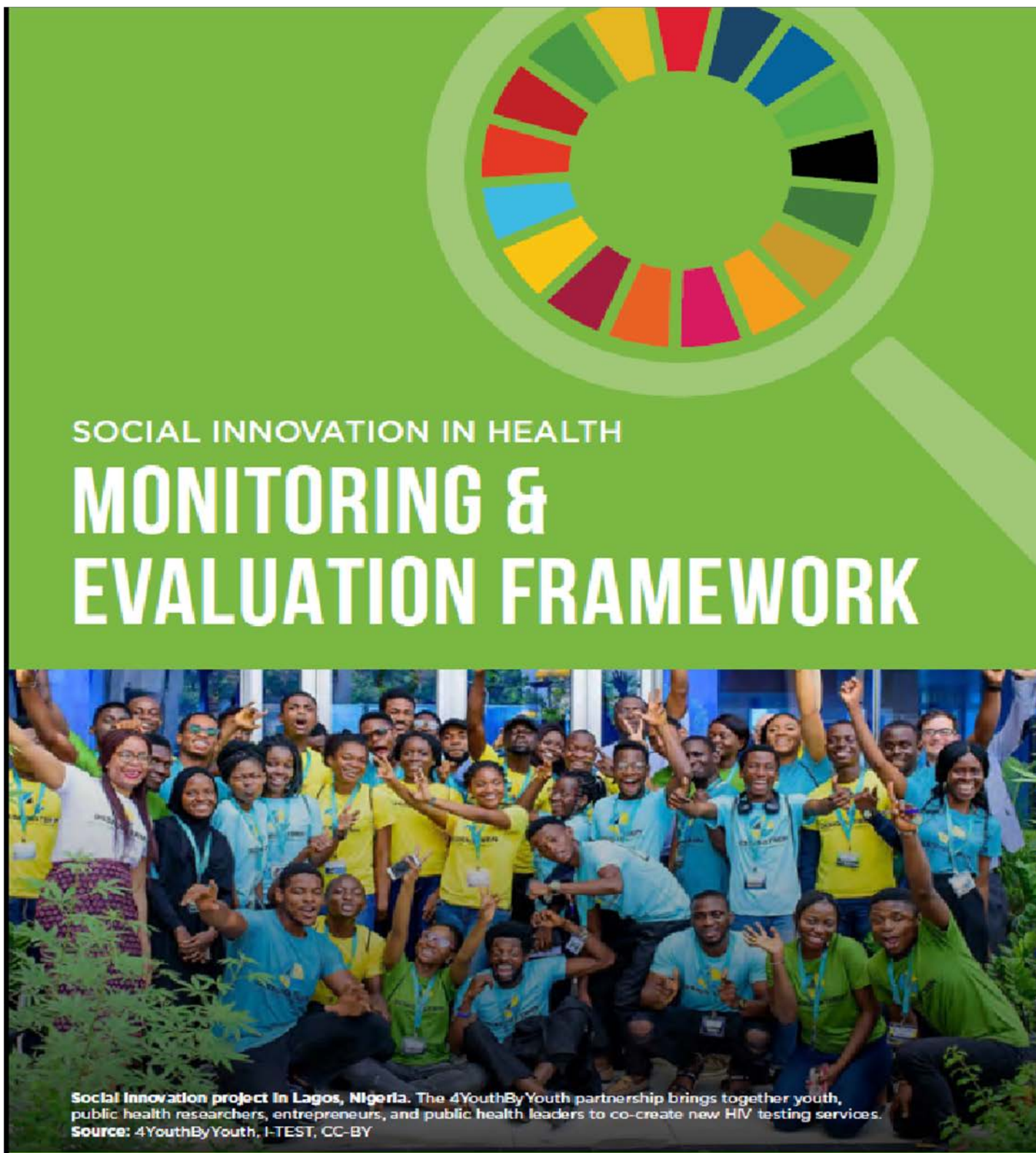
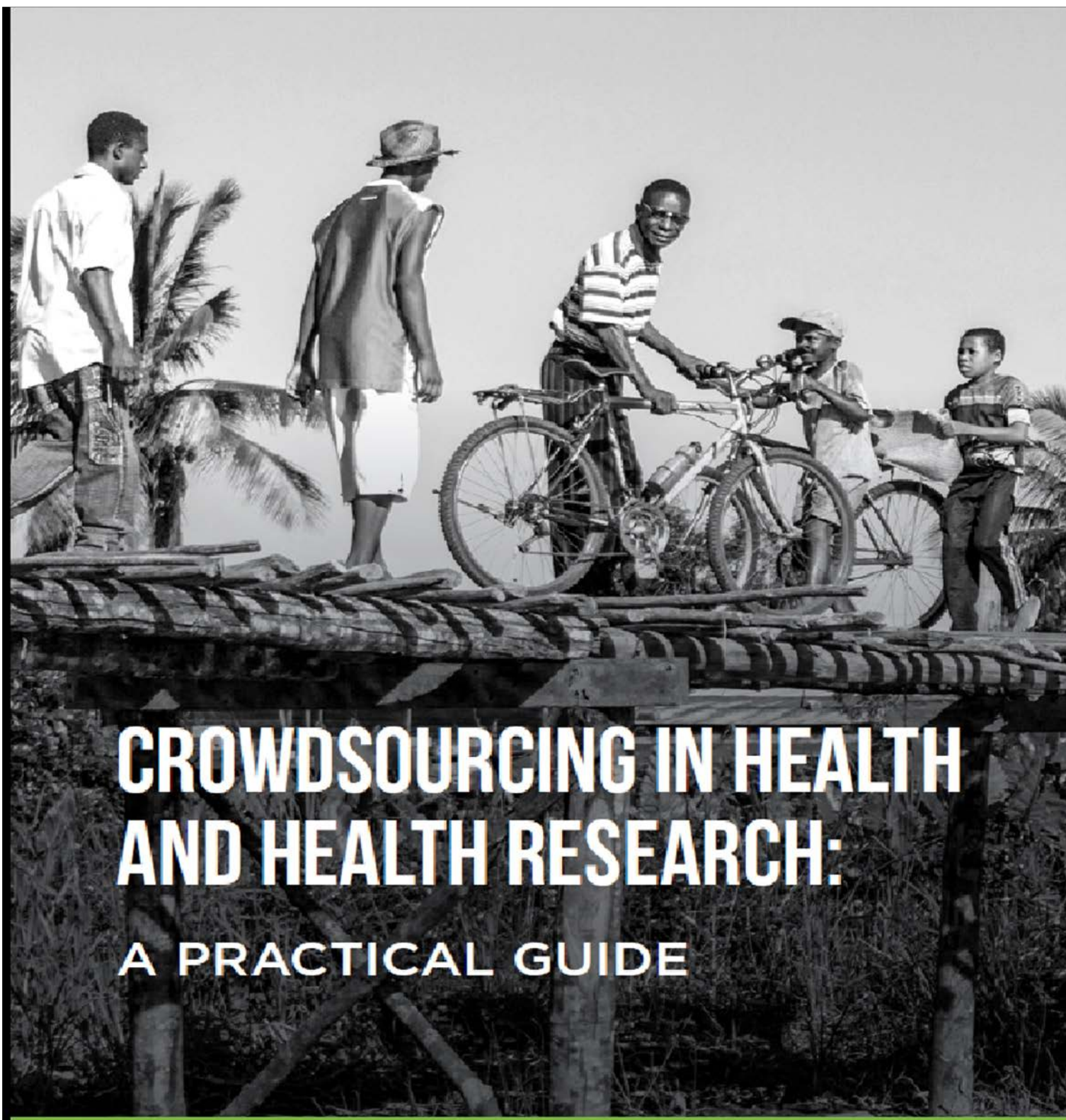


Credit: L. van Niekerk



Source: <https://tdr.who.int/home/our-work/global-engagement/gender/tdr-intersectional-gender-research-strategy-brochure>

Research Tools Co-Created by SIHI Hubs



FROM SOCIAL INNOVATION RESEARCH TO UHC & SDGS



Social Innovations

Social Innovations in Health Systems

WHO Frameworks

INTEGRATED PEOPLE CENTERED HEALTH SERVICES

COMMUNITY ENGAGEMENT

RESEARCH

- Sustainability
- Replicability
- Scaling up
- Demonstration of impact



UHC



BEYOND HEALTH IMPACT

-  Vulnerable Populations
-  Reaching the Last Mile
-  Community Empowerment
-  Multidisciplinary/ Intersectoral Partnerships

Towards Institutionalization and Sustainability

Gelia Castillo Award for Research on Social Innovations in Health (GCARSIH) in the Philippines

Extended Deadline for Submissions!

CALL FOR APPLICATIONS

Gelia Castillo Award for Research on Social Innovations in Health

Calling social innovators in health!

We are searching for social innovations that address health challenges and improve healthcare delivery in the Philippines. We would like to recognize your work, and help with further development and scale up!

Innovations must be:

- ✓ Developed by Filipinos for Filipinos
- ✓ Implemented in the country for at least one year
- ✓ Must be based on an identified priority health need of a community or beneficiaries

For more information, please contact your local RHRDC, or visit: <https://pchr.dost.gov.ph/>

SIHI Hubs → University Center for Innovation and Research in Malawi

SIHI // Malawi's Social Innovation Journey

CENTRE FOR INNOVATION AND RESEARCH

Innovators are excited about the support they will receive from this new centre!

THANK YOU

SOCIAL
INNOVATION
IN HEALTH
INITIATIVE



Made possible with the support of TDR

TDR is able to conduct its work thanks to the commitment and support from a variety of funders:

See: <https://tdr.who.int/about-us/our-donors>

The Swedish International Development Cooperation Agency (Sida)
has also contributed designated funding for this project

